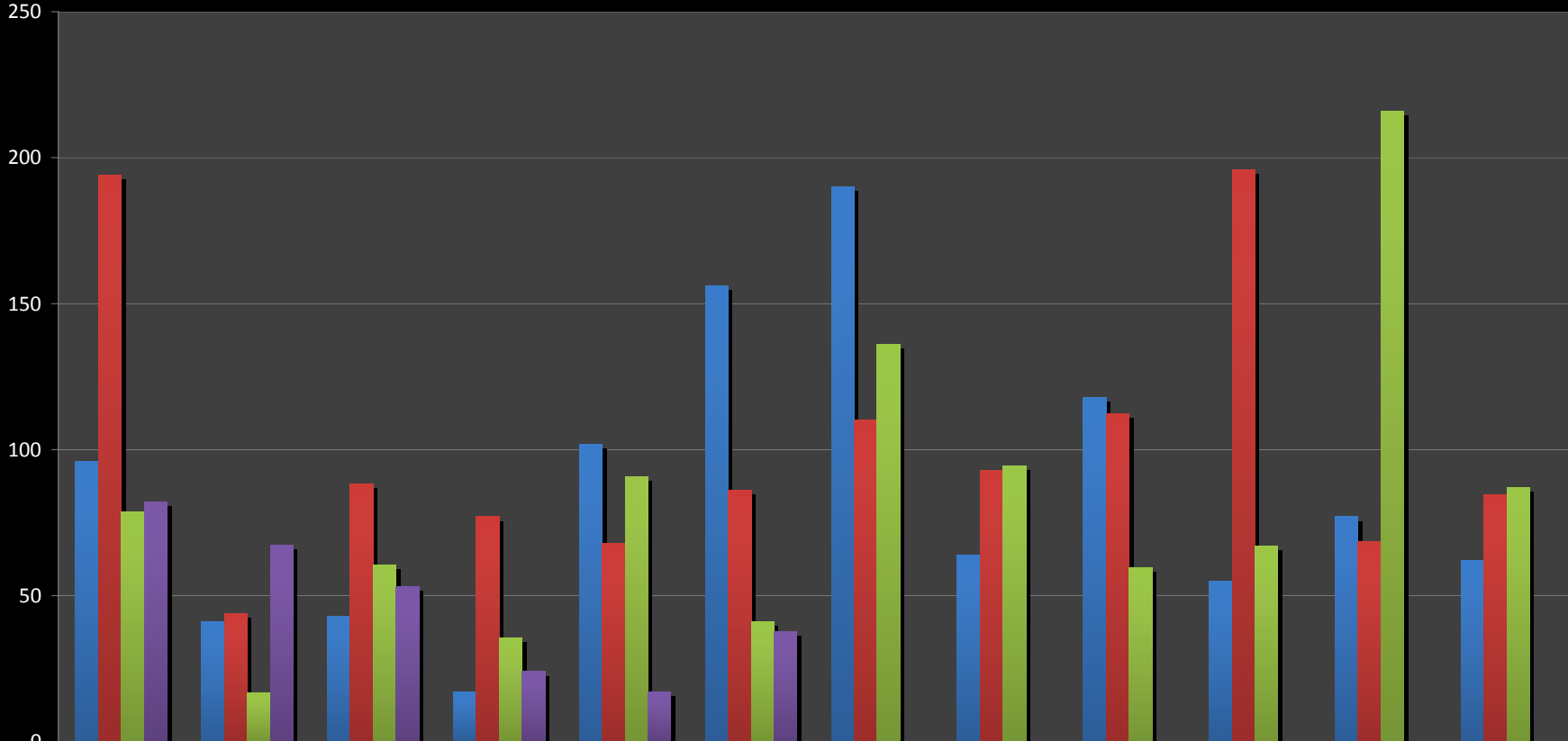


Rainfall 07-10 in mm

- 2007 rainfall 1021 mm
- 2008 rainfall 1212 mm
- 2009 rainfall 984 mm
- 2010 to date 281.2mm



	1	2	3	4	5	6	7	8	9	10	11	12
■ 2007	96	41	43	17	102	156	190	64	118	55	77	62
■ 2008	194	44	88.2	77	67.8	86.2	110.2	92.8	112.2	196	68.4	84.4
■ 2009	78.8	16.8	60.4	35.6	90.8	41.2	136.1	94.6	59.6	67	216	87
■ 2010	82	67.4	53.2	24	17	37.6	0	0	0	0	0	0